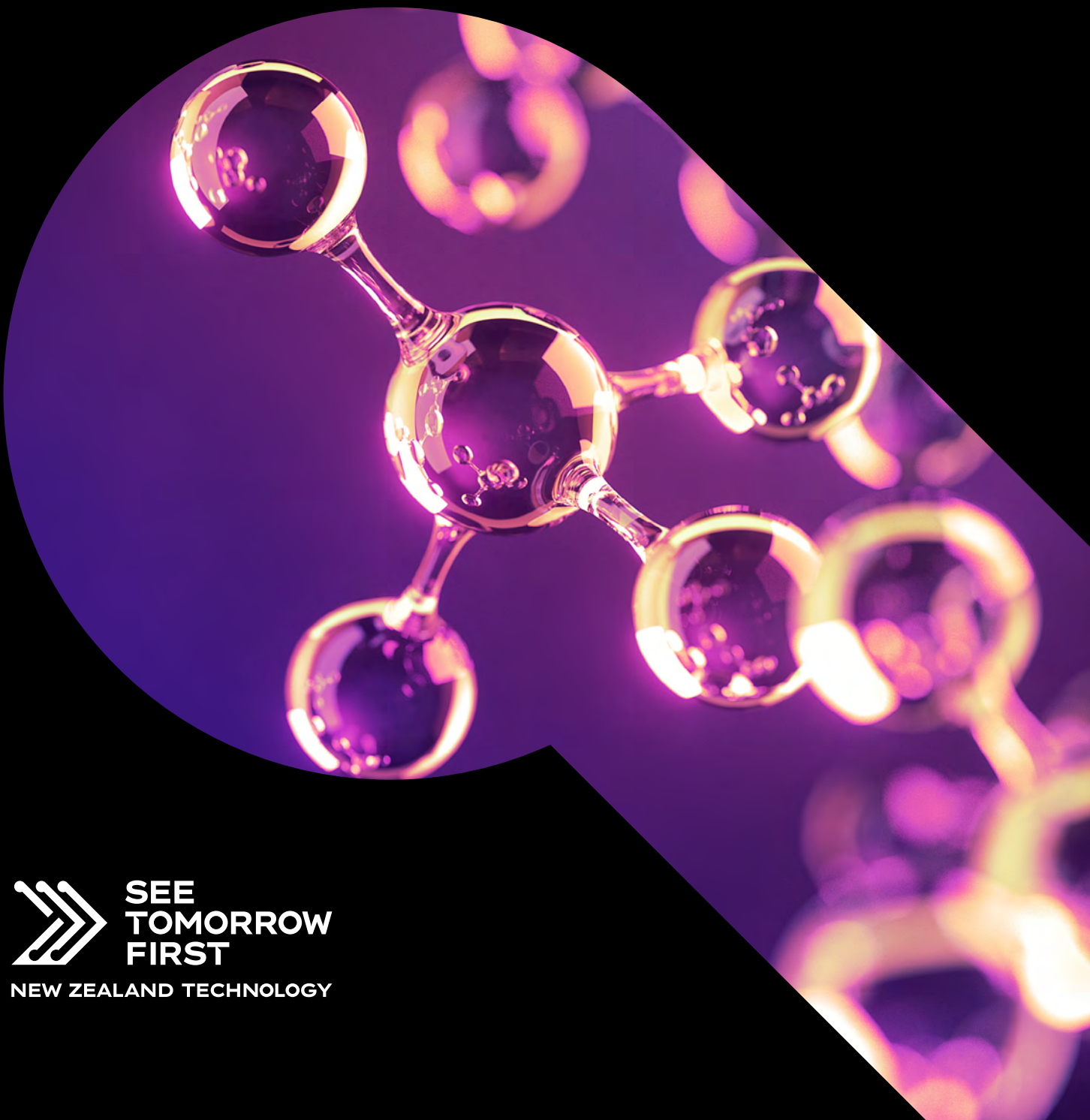


NEW ZEALAND:

A HUB OF BIOTECH INNOVATION

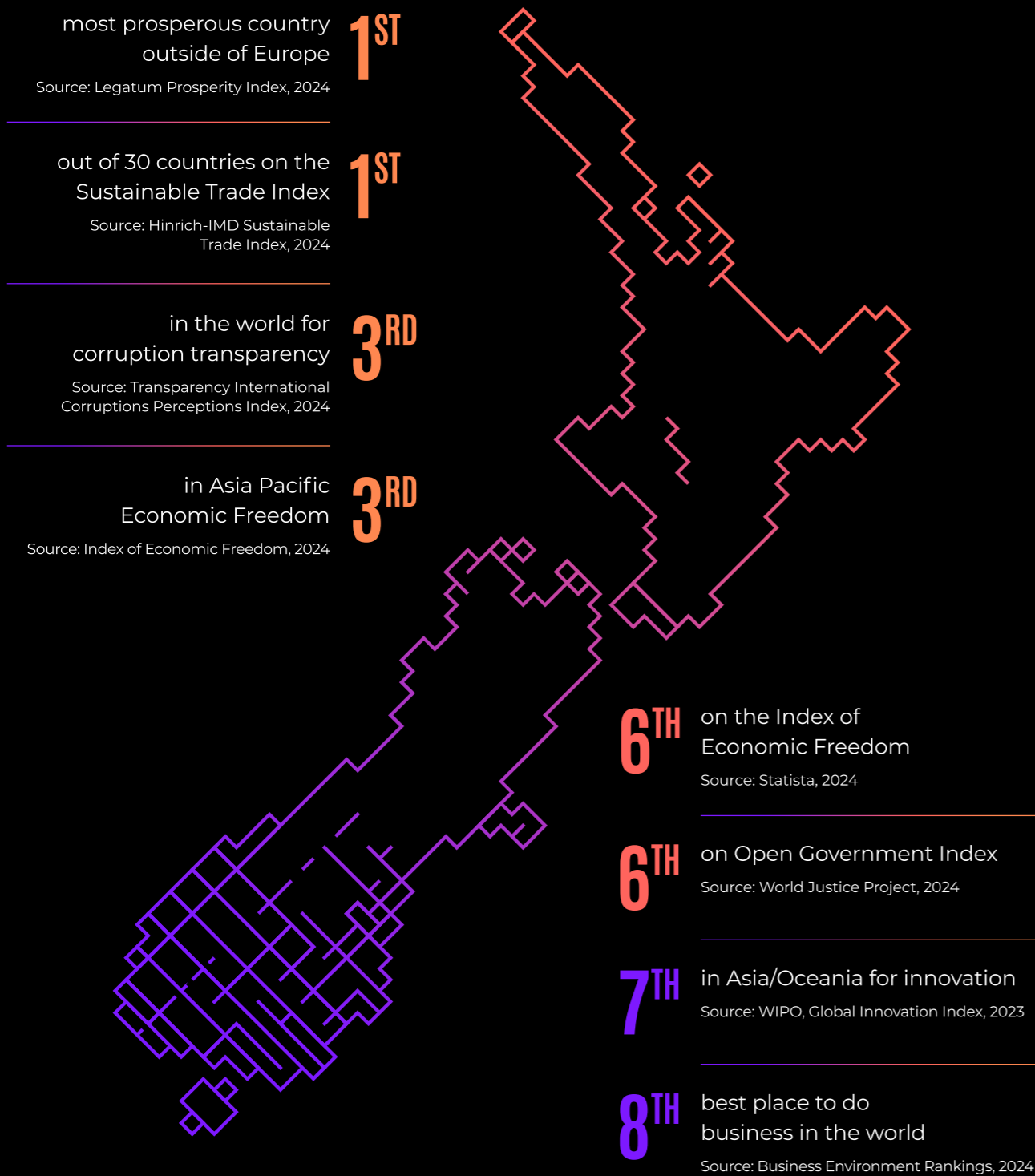


**SEE
TOMORROW
FIRST**

NEW ZEALAND TECHNOLOGY

NEW ZEALAND IS YOUR TRUSTED, STABLE BUSINESS PARTNER

We lead and rank high on several global indexes.



BIOTECHNOLOGY IS IN OUR GENES

New Zealand's bioeconomy is underpinned by a long tradition of applying research to wide ranging issues in human and animal health, food, agriculture and energy.

We have a growing number of high-tech companies whose core business is biotechnology.

This is driven by a great climate for doing business, world-class research and an innovative workforce. In 2025, New Zealand was ranked 4th out of 54 countries in the Scientific American Worldview Scorecard for Innovation Potential in Biotechnology.

Source: Global Biotechnology Innovation Scorecard, 2025

WE HAVE A REPUTATION FOR:



Biotech Research & Development (R&D)

- Human therapeutics
- Medical devices
- Clinical trial location
- Protein development
- Animal-based therapeutics
- Unique natural ingredients
- Medicinal plant growth
- Environmental microbiology



A collaborative and educated biotech workforce

- Collaborative research environment
- Research excellence
- Highly educated workforce
- Leading filer of patents



Being a great place to do business

- Leader on business indexes
- Supportive tax regime
- Access to export markets
- Harmonized and clear regulatory pathway
- New Zealand is a PIC/S member

WHERE INNOVATION MEETS IMPACT

New Zealand has unique strengths that support biotechnology R&D and other opportunities.

High potential for drug discovery translation

Research institutes in New Zealand have been a fruitful ground for the discovery of candidates for human therapeutics. This includes several products now approved in global markets, such as Mundesine® and DAYBUE. This is supported by a wider ecosystem of early drug development, including GMP clinical trial material manufacture, fill and finish (including sterile injectables) and commercial GMP manufacture, all under a harmonized PIC/S regulatory environment.

Growing medical device sector

New Zealand's medical device sector is a dynamic and rapidly growing industry, driven by innovation and a strong focus on healthcare advancements. This sector is a significant part of the country's health tech industry, contributing billions in revenue. Major players like Fisher & Paykel Healthcare lead the market, particularly in medical devices, diagnostics and digital health. With a thriving pipeline of startups and established companies, New Zealand continues to make a mark on the global stage in medical technology.

Efficient and high-quality clinical trials

New Zealand's clinical trial ecosystem is supported by an efficient ethics and regulatory framework which results in fast start-up times. There are world-class research facilities and a diverse participant recruitment pool. We also have an English-speaking health sector with well-respected key opinion leaders and hospitals.

Top-tier animal health status for animal-based therapeutics

New Zealand's livestock have one of the highest disease-free status levels globally. From land use availability and animal health services to agricultural technology and world-class agri-bio research and manufacturing facilities, New Zealand can support international companies developing human therapeutics that require animal-derived ingredients. Argenta is a global New Zealand company providing end-to-end solutions for animal health products, from drug development to manufacturing. There are many opportunities to partner or invest in New Zealand animal health companies to make a difference for both animal and human health.

Global leader in natural ingredients

New Zealand's favorable climate, fertile soil, geography and agricultural ingenuity have positioned the country as a global leader in the production of natural ingredients. New Zealand is also home to many indigenous plants which are often rich in desirable bioactives. Offerings range from high-value nutritional food products to functional foods and ingredients.

Expertise in protein development

New Zealand has expertise in enabling protein focused platform technologies due to our rich history in food production. This aligns with one of the most significant global nutrition trends – a rapidly increasing demand for high-quality protein production and protein extracts.

Optimal conditions for medicinal plant growth

New Zealand's climate, counter seasonal production benefits, risk management for diversifying investments, and experienced growers offer significant advantages to the production of medicinal plants. New Zealand properties can result in increased amounts of active ingredients and lower levels of residues that can be difficult to remove from end products.

Environmental microbiology

Unique microbes combined with New Zealand's clean green status and novel research have resulted in many unique industrial and environmental microbe-based applications, from waste stream-derived biofuels to thermophilic enzymes.

Collaborative research environment

New Zealand has high levels of research collaboration, driven by strong partnerships between the private sector, universities, government agencies, Public Research Organizations, Centers for Research Excellence and other research programs. New Zealand's approach is ensuring public and private stakeholders work together to create interdisciplinary excellence, particularly in areas like health, environmental science and technology.

Research excellence

Significant levels of high-quality biotechnology research are conducted by the higher education sector in all of New Zealand's eight major universities, Centers of Research Excellence and niche research institutes – including the Liggins Institute and the Malaghan Institute of Medical Research.

New Zealand's government-funded Public Research Organizations are research institutes that each specialize on a specific field such as bioeconomy, earth sciences, (including climate and hazards resilience), health and forensic science services.





BIOORA - CELL THERAPY FOR EVERY PATIENT IN NEED

BioOra brings life-changing cell therapies closer to global commercial success.

BioOra is automating the manufacture of CAR T-cells to combat cancer. CAR T-cell therapy is transformative, but complex logistics, lack of standardized manufacturing processes and high costs limit access to CAR-T therapies to combat cancer, which in turn limits the commercial success of these life-changing innovations.

BioOra addresses both access and scale issues by providing an affordable and accelerated pathway to market for CAR-T therapies via lower cost, high throughput, GMP licensed manufacturing capabilities from clinical trial through to registration and commercialization.



John (JR) Robson
Managing Director

john.robson@bioora.com



DOUGLAS CDMO - WE ARE BETTER TOGETHER

We are a boutique CDMO specializing in hard to formulate softgel and liquid formulations.

Douglas CDMO is a private, family-owned company located in Auckland, New Zealand. We offer end-to-end integrated drug development services, specializing in formulating and commercially supplying innovative and generic high-potency small molecule softgels and liquids.

Our capabilities extend to producing prescription drugs across key therapeutic areas including dermatology, oncology, endocrinology and the central nervous system.



Susan Lynch-Smith
Head of Business Development

susanls@douglas.co.nz



KIMER MED - IMAGINE A WORLD WITHOUT VIRAL DISEASE

Kimer Med is a New Zealand biotechnology company that is advancing a pipeline of novel, broad-spectrum antiviral therapeutics to treat disease and save lives.

Viruses infect billions, kill millions and cost trillions. Right now, 95% of the viruses that cause disease in humans lack an approved antiviral treatment.

Kimer Med, a pre-clinical biotechnology company, is advancing a pipeline of new, broad-spectrum antiviral drug candidates, using its proprietary recombinant protein platform. Multiple in vitro studies confirm our platform's broad-spectrum capability, with efficacy so far against 21 different viruses across 9 virus families.

These results include all 4 serotypes of Dengue, Zika, Rotavirus, several cold and flu viruses, and 6 herpes viruses including EBV, HSV-1 and HSV-2.

Our preliminary in vivo data establishes the efficacy and low toxicity of our antiviral compounds. We closed a successful Series A round in October 2024, raising NZD\$14 million to fund the development of our lead candidate through to Phase 1 trials.

Broad-spectrum antivirals are urgently needed, with many important applications creating a range of significant markets and opportunities.



Rick Kiessig
CEO

rick@kimermed.co.nz



NEW ZEALAND CLINICAL RESEARCH - ADVANCING GLOBAL HEALTH

Partnering with sponsors for 25+ years to deliver expert clinical pharmacology services and high-quality data; advancing global healthcare through efficient, compassionate trial execution.

NZCR is a trusted network of clinical pharmacology units in New Zealand, specializing in Phase I-IV trials for global sponsors.

We offer seamless access to healthy volunteers and treatment-naïve patient populations across a country with U.S.-comparable disease prevalence, world-class healthcare, and highly trained specialist physicians.

Our end-to-end clinical services includes regulatory guidance and submissions, expert medical oversight throughout the study lifecycle, and integrated in-house pharmacy, laboratory, and advanced imaging capabilities.

With four strategically located sites and a dedicated national recruitment team, NZCR ensures fast, reliable enrollment and high-quality data accepted by FDA and EMA – all delivered with significant cost savings and operational efficiency.



Holly Thirlwall
Business Development Manager

holly.thirlwall@nzcr.co.nz

UNISERVICES - UNIVERSITY OF AUCKLAND'S COMMERCIAL RESEARCH AND KNOWLEDGE TRANSFER ARM

Connecting university capabilities with industry, investors, government, and communities for real-world impact and economic growth.

UniServices, the not-for-profit commercialization and research translation arm of Waipapa Taumata Rau, University of Auckland, plays a key role in Aotearoa New Zealand's innovation ecosystem. We connect researchers with funding, industry, and government partners to turn ideas into impact, supporting an increasingly entrepreneurial university environment. Through our NZD\$40M investment fund, we invest in emerging technologies and companies from the University, working closely with founding teams to validate and de-risk their ventures

We're committed to helping research from the University tackle global challenges, from climate change adaptation and emissions reduction to fulfilling international commitments. We welcome opportunities to partner with investors and collaborators who share our ambition to translate research into real-world solutions.



Dr. Anisoara Nicol
Partnerships & Innovation Manager

ani.nicol@auckland.ac.nz



WELLINGTON UNIVENTURES - JUST LIKE YOU, WE WANT TO MAKE A DIFFERENCE IN THE WORLD

Wellington UniVentures supports translating trailblazing research from Victoria University of Wellington – we work with our university innovators to shape their research into initiatives creating impact.

Wellington UniVentures is the research commercialization arm of Victoria University of Wellington, New Zealand.

Wellington UniVentures works with our university innovators to shape their research into initiatives that create impact. We do this by connecting them with partners, industry and investors to enable the growth and development of their idea or invention. With time, development and Wellington UniVentures' support, these ideas can become life changing initiatives focused on solving problems and building stronger societies.

The core areas of research focus we see span from health and biotechnology (drug discovery, vaccines, natural products, enzymology and synthetic biology) to environment and engineering (new materials, optical instrumentation, electrification of industry, high-temperature superconductors).

We are attending U.S. BIO seeking:

Licensees/development partners for a range of hit to preclinical assets across oncology, vaccines, and infectious disease.

Useful networks to support market-validation, development and commercialization of NZ-grown IP.

Early-stage investors into biotech opportunities.



Sam Wojcik

Senior Commercialization Manager

sam.wojcik@wellingtonuniventures.nz

SUPPORTIVE TAX REGIME

The New Zealand tax system is simpler (and less taxing) than most. New Zealand offers a **15% tax credit for R&D activity completed in New Zealand.**

Strong access to export markets

Multinationals can use their footprint in New Zealand to secure a sustainable supply of high-value ingredients and can get strategic access to Asian markets. New Zealand's location proximity to Asia provides a highly advantageous time zone for doing business there. We also have Free Trade Agreements in place with much of the Asian market. The New Zealand brand and image carry a good reputation with consumers in these markets, with recognition that we are a global leader in ingredient safety and product traceability.



CONNECT. COLLABORATE. INVEST.

We are dedicated to helping biotechnology research and development investors connect, collaborate and invest in New Zealand.

Our small size and interconnected research system makes global collaboration easy.

Invest New Zealand is a new agency created to support international investors, companies and startups establish a presence in New Zealand. We provide a specialized concierge service to biotech companies looking to do R&D or establish other operations in New Zealand.

We can help you:

- Navigate and understand New Zealand's R&D ecosystem.
- Benefit from our straightforward and high-quality regulatory system.
- Connect you with ecosystem partners.
- Connect you to immigration, visa and customs experts so that you can easily bring your R&D business here.
- Take advantage of New Zealand's streamlined tax system and new R&D tax incentive.

Ready to discover your next investment?

Talk to our team to discover opportunities for your business in New Zealand.



Charlie Wilkinson

Investment Manager,
North America
Charlie.Wilkinson@nzte.govt.nz



Michael Loginoff

Investment Manager
Michael.Loginoff@nzte.govt.nz

EXPLORE. PARTNER. THRIVE.



New Zealand has companies and commercialization offices representing all parts of our burgeoning biotech industry. Now is the time to meet with our innovative companies. You can reach out directly to our companies and book a meeting today.

New Zealand Trade & Enterprise (NZTE) is the government agency helping New Zealand businesses grow internationally. If you would like to find out more about partnering with a New Zealand company, then please contact NZTE.



Niall Gordon
U.S. Lead, Health and Medtech
Niall.Gordon@nzte.govt.nz



BIOTECH NZ is a member-based organization focused on growing New Zealand's bioeconomy. BIOTechNZ's aim is to raise awareness and increase understanding of biotechnologies to enable New Zealand to live, cleaner, healthier, and more prosperous lives.

Zahra Champion
Executive Director
Zahra.Champion@biotechnz.org.nz

YOUR GATEWAY TO EXCELLENCE



Brandon BioCatalyst brings together over 50 of New Zealand and Australia's medical research institutes, investors, and government partners to progress the next generation of medical therapies and technologies that improve health and save lives.

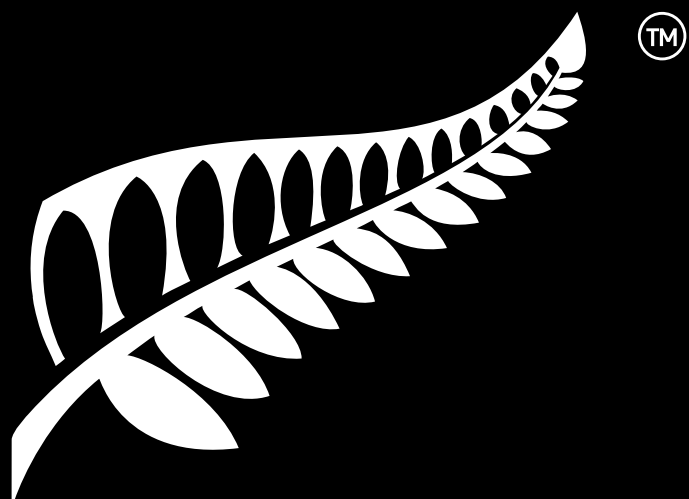
Managed and operated by Brandon Capital, Brandon BioCatalyst is a collaboration that sits at the intersection of industry, investing, and government. By fostering knowledge sharing within ANZ's research community, the network accelerates the development of breakthrough treatments and healthcare innovations from discovery to real-world impact.

Duncan Mackintosh
Senior Investment Manager (NZ)
dmackintosh@bcpvc.com



Bridgewest Ventures is a venture capital company and deep tech incubator based in Auckland, New Zealand, that invests in and supports early-stage, high-growth companies, particularly in biotech, hi-tech, and sustainable technology. It's a subsidiary of Bridgewest Group, a US-based investment company with a global presence.

John Robson
General Manager
john.robson@bridgewest.ventures



NEW ZEALAND